

Project Launch Workshop

July 17, 2025



☆ LCI Planning
Guidelines Update

Overview of LCI's Planning Activities



Guidelines & Technical Advisories

Update General Plan Guidelines
Develop Technical Advisories



Technical Assistance

Respond to Public Inquiries
Help Interpret Planning Laws
Review Proposed Legislation
Review Grants



External Partnerships

Interagency Working Groups
Review State Documents
Collaborative Research with
Academic Institutions



Local Government Reporting



Annual Planning Report
Annual Planning Survey



Planning & Land Use Activities



Zoom Technical Logistics

- Orient yourself to Zoom meeting controls

Mute  / Unmute 

Start Video  / Stop Video 

Chat 

- Rename yourself to include your name and organization
 - On the Zoom in-meeting controls, click Participants .
 - Hover your mouse over your name, then click the ellipsis .
 - Click Rename. A pop-up box will appear.
 - In the pop-up box, enter your display name.
 - Click Change.
- This meeting will be recorded

Agenda

- Welcome
- Presentation: Overview of LCI Planning Guidelines Update
- Small Group Discussion
- Closing and Next Steps

Please take our demographic poll!



CA Governor's Office of
Land Use and
Climate Innovation

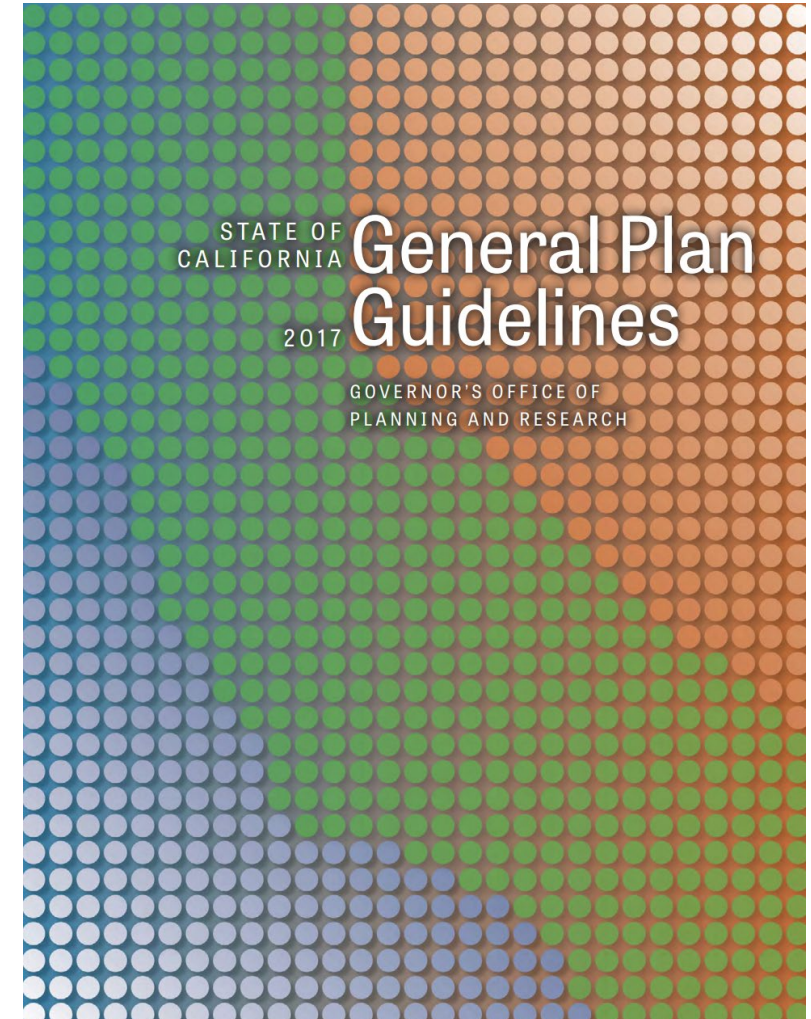
LCI Planning Guidelines Update Overview



☆ LCI Planning
Guidelines Update

Project Components

- Comprehensive updates to:
 - General Plan Guidelines
 - Planner's Guide to Specific Plans
 - Tribal Consultation Guidelines
- An interactive project website
- Complete by March 2027

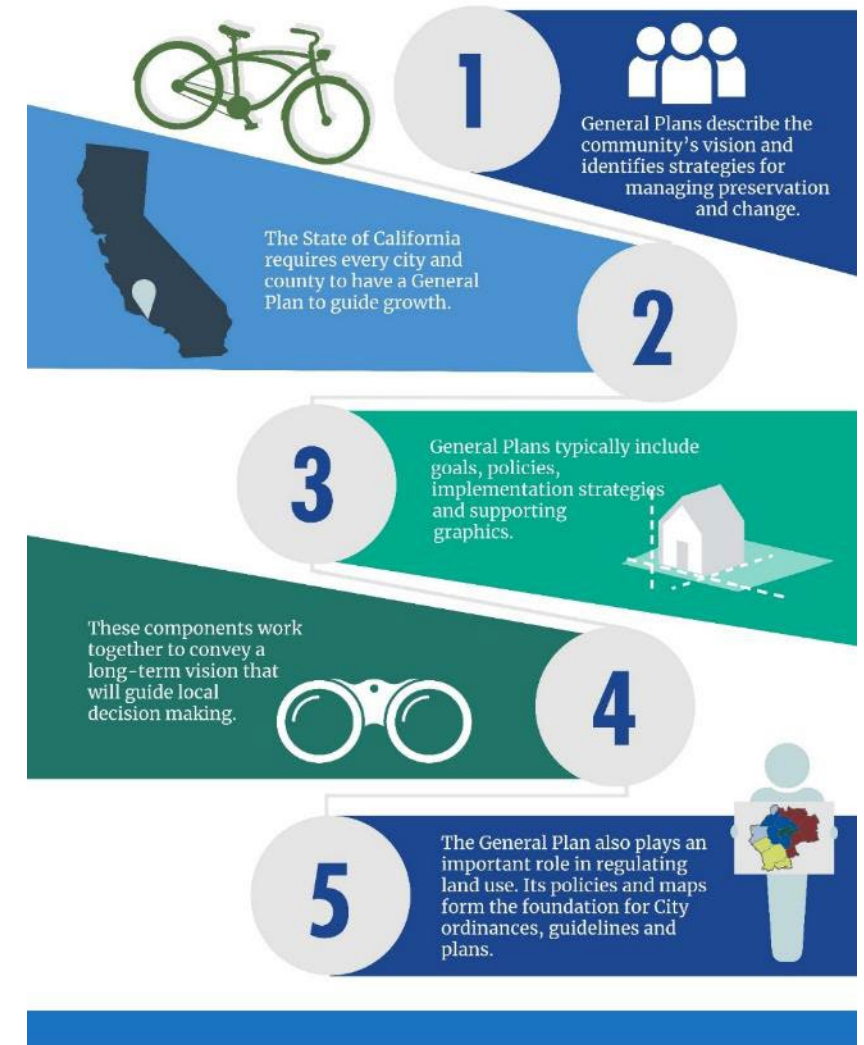


General Plan Overview

- Long-term policy document to **guide the future actions**
- Enables the community to come together to develop a **shared vision** for the next 25-30 years
- Preserves and enhances **community strengths**
- Addresses **topics of concern**

WHAT IS A GENERAL PLAN?

A General Plan is like a road map for the future of Ventura



General Plan Elements

- | | |
|-----------------|--------------------------|
| 1. Land Use | 6. Safety |
| 2. Circulation | 7. Environmental Justice |
| 3. Housing | 8. Noise |
| 4. Open Space | 9. Air Quality |
| 5. Conservation | |

- *Jurisdictions may add “optional” elements*
- *Elements can be combined in any way*



Specific Plan Overview

- A comprehensive planning and zoning tool for a small area
- Establishes the vision and guiding principles
- Defines policy and development standards
- Strong focus on implementation
 - Regulations
 - Infrastructure needs
 - Costs



Tribal Consultation Overview

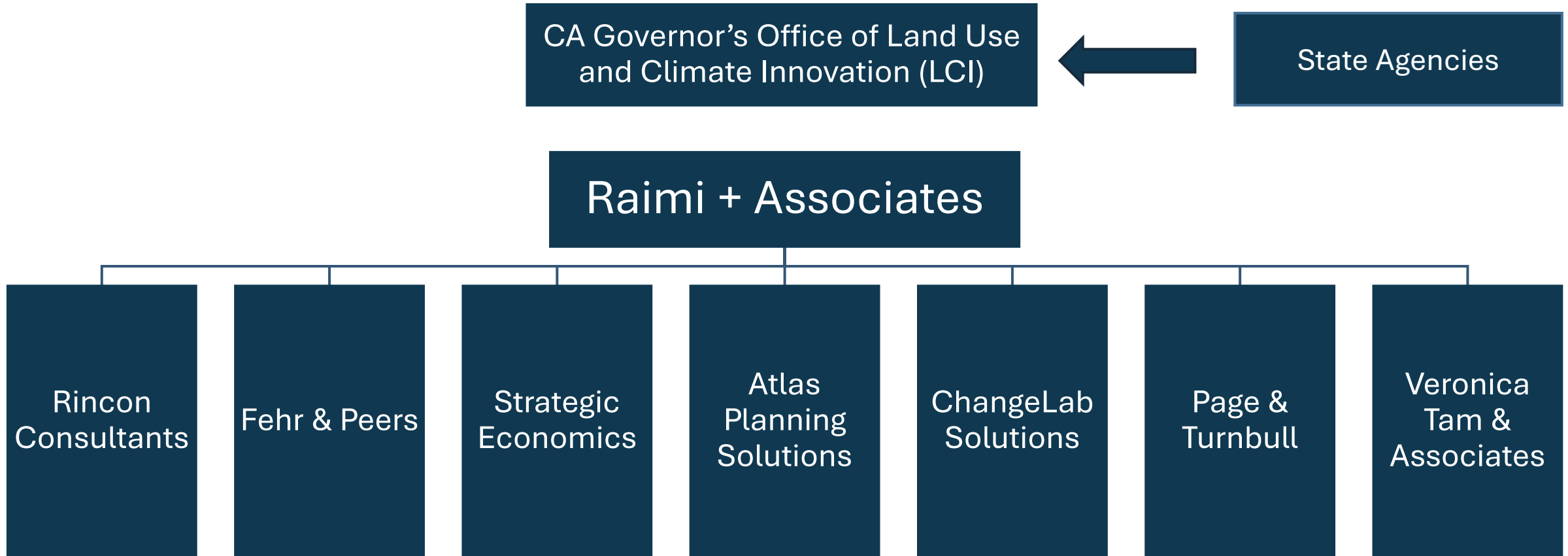
- Government-to-government process designed to ensure that Native American tribes have a meaningful role in decisions that affect their cultural resources, ancestral lands, and community interests.
- Conducted when a jurisdiction considers a proposal to adopt or amend the general plan and specific plan or make decisions that could impact Tribal resources.
- Required by SB 18 (2004) and AB 52 (2014)



Why is LCI updating the Planning Guidelines?

- Documents out-of-date
 - General Plan Guidelines – 2017
 - Specific Plan Guidelines – 2001
 - Tribal Consultation Guidelines - 2005
- Reflect changes in State laws
- Add tools and resources to assist with “nuts and bolts” of planning
- Make the documents more streamlined and user friendly
- Include a wider range of topics
- Add guidance for all community types and geographies
- Make a web version

Who is the LCI Guidelines Team?



General Plan Guidelines Topics

- 9 Required Elements
- Additional Topics/Elements
 - Historic Preservation
 - Water
 - Economic Development
 - Urban Design and Placemaking
 - Agriculture and Working Lands
- Cross-cutting Topics
 - Community Engagement/Tribal Perspectives
 - Climate Mitigation, Adaptation and Resilience
 - Equity and Health
 - CEQA for General Plans



Who are we asking for input?

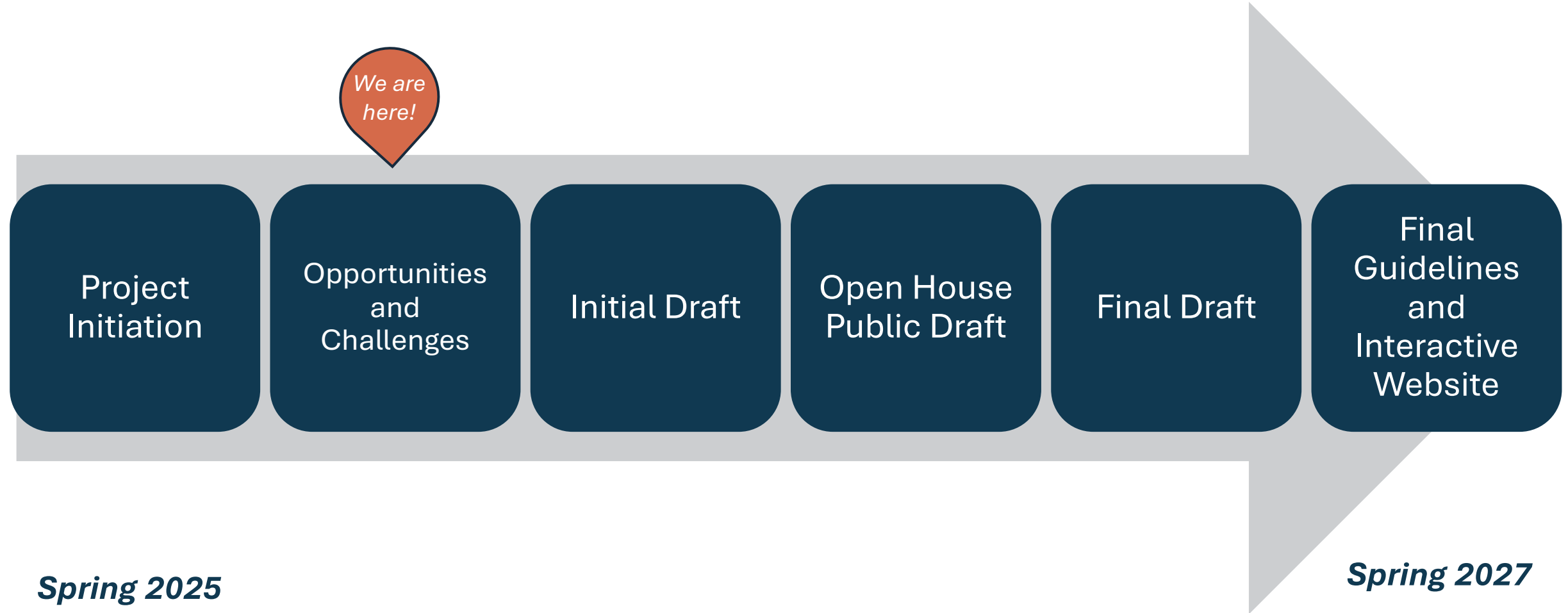
- Local and county government planners
- Consultants working with local governments
- Tribes
- Government agencies working on planning-related activities (MPOs, State agencies)
- Non-governmental organizations/advocacy groups
- Elected and appointed officials
- Individuals

Schedule and Workflow



☆ LCI Planning
Guidelines Update

LCI Planning Guidelines Timeline



Engagement Activities

- Project Launch Workshops ★
- Informal Listening Sessions
- Topic-specific Advisory Groups
- In-person and Virtual Workshops
- Online surveys and feedback forms
- Tribal engagement
- Priority Population Engagement
- State Interagency Working Group
- California APA Conference

Topic-Specific Advisory Groups

Purpose: Provide input on content and review draft documents

Topics

- Land use, housing, urban design
- Mobility
- Safety
- Economic development
- Climate mitigation, adaptation, resilience
- Open space and conservation
- Water
- Legal/CEQA
- Priority Populations

Approach

- Approx 20-30 people each
- Represent diversity across the state
- Meet up to 5x during the process
- Provide input on content and review draft documents



To sign up, please fill out the interest form with the QR code or email planningupdate@lci.ca.gov

What's Next?

- **Project Updates:** Sign up with the QR code to receive project updates
- **Advisory Groups**
 - 1st meeting on August 21st from 10 am – noon (virtual)
- **Priority Populations Focus Group**
 - 1st meeting late August
- **Tribal Engagement**
- **Regional Workshops (virtual)**
 - Tuesday, Sept 9, 10 -11:30 am
 - Thursday, Sept 11, 2 – 3:30 pm
 - Wednesday, Sept 17, 10 – 11:30 am
- **APA Conference Sessions (Tuesday, Sept 30)**



Fill out the interest form to sign up for an Advisory Group and stay up to date on the project!

Please take our planning background poll!



CA Governor's Office of
Land Use and
Climate Innovation

Discussion



☆ LCI Planning
Guidelines Update

Breakout Groups

- You will be randomly assigned to a breakout room
- Facilitators will guide you through the discussion questions
- Feedback should be provided on the Zoom whiteboard
 - Facilitators will share a Zoom whiteboard and provide instructions
 - As discussion is happening, please add sticky notes to the Zoom whiteboard with your thoughts and ideas
 - Try to capture your ideas on the whiteboard rather than chat; use chat if you are unable to capture ideas on the whiteboard

Whiteboard tools

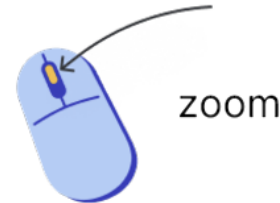
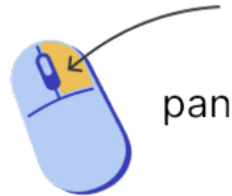
Keyboard

Use + and - as keyboard shortcuts to zoom in and out



Mouse

Use the scroll wheel to zoom
Use right click to pan the canvas



Touchscreen or Trackpad

Pinch to zoom in and out
Use two fingers to pan the canvas



zoom



pan

Want to add a post it note? Type “N” to add a post it note where your cursor is OR click the post it icon in the left toolbar to add them.

Agree with the content of a post it note? Select the post it note, click add emoji (🗨️), and put a thumbs up (👍).

Discussion Questions

1. What planning-related challenges are you facing in your current work?
2. What are your thoughts on the current Planning Guidelines (General Plan, Specific Plan and Tribal Consultation)? What is helpful and what needs to be improved?
3. What content or types of information should be included in the updated Planning Guidelines?
4. What would be the most useful format for the guidelines?
5. Do you have any other thoughts or ideas about the Guidelines or the update process?

Closing and Next Steps



☆ LCI Planning
Guidelines Update

What's Next?

- **Project Updates:** Sign up with the QR code to receive project updates
- **Advisory Groups**
 - 1st meeting on August 21st from 10 am – noon (virtual)
- **Priority Populations Focus Groups**
 - 1st meeting late August
- **Tribal Engagement**
- **Regional Workshops (virtual)**
 - Tuesday, Sept 9, 10 -11:30 am
 - Thursday, Sept 11, 2 – 3:30 pm
 - Wednesday, Sept 17, 10 – 11:30 am
- **APA Conference Sessions (Tuesday, Sept 30)**



Fill out the interest form to sign up for an Advisory Group and stay up to date on the project!

Questions?

Visit the project website for more information:

planningupdate.lci.ca.gov/

Reach out to the LCI Planning Guidelines Update team (planningupdate@lci.ca.gov) with any questions about the project!



*Fill out the interest form to
sign up for an Advisory Group
and stay up to date on the
project!*

Thank you!



☆ LCI Planning
Guidelines Update